

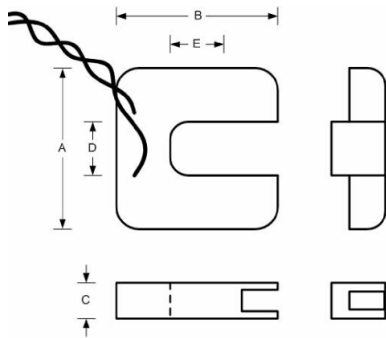
SCT Split-Core Current Transformers

The ND SCT series of retro-fit (split-core) current sensors are designed for fast and easy installation without the need to disconnect any loads. High precision units, they are equally suitable for Current or Power measurement - ideal for Energy Management or any form of automation and control systems.

An internal precision resistor across the secondary winding of the CT provides a safe low voltage output - no more worries about open-circuiting CT secondary circuits.



- **Low Cost**
- **Safe, easy & simple to install**



Model
SCT19 - xxxx
SCT32 - xxxx
SCT51 - xxxx

Dimensions (mm ± 0.5mm)

	A	B	C	D	E
SCT19 - xxxx	51	53	17	19	19
SCT32 - xxxx	82.5	85	27	32	32
SCT51 - xxxx	121	127	32	51	51

Brief Specification

Electrical	
Nominal Input Current I_n	
SCT19	5 Amp – 150 Amp
SCT32	70 Amp – 600 Amp
SCT51	600 Amp - 1500 Amp
Maximum Input Current I_{max}	
SCT19	200 Amp
SCT32	800 Amp
SCT51	2000 Amp
Output at I_n	0.333V _{ac}
Frequency Range	50-60 Hz
Accuracy (0.1 I_n – 1.3 I_n)	± 1%
Phase Error	< 2° at 0.5 I_n

Mechanical	
Enclosure	ABS to UL94V-0
Construction	Epoxy encapsulated
Insulation Voltage	600 V _{rms}
Environment	Indoor use only, altitude < 2000m
Operating Temperature	-15°C to +60 °C
Humidity	Max 80% RH at 30°C Non-condensing
Output Connection	2m twisted pair cable 0.34mm ² , UL 1015

Available Models

Model	Nominal Current I_n FSA	Weight	Stock Units
ND SCT19 - FSA	5, 10, 15, 20, 30, 50, 70, 100, 150 Amp	125 gms	150 Amp
ND SCT32 - FSA	70, 100, 150, 200, 250, 300, 400, 600 Amp	350 gms	400 Amp
ND SCT51 - FSA	600, 800, 1000, 1200, 1500 Amp	950 gms	-

Non-stock units are available to special order with an MOQ of 100 units – please consult sales for delivery.